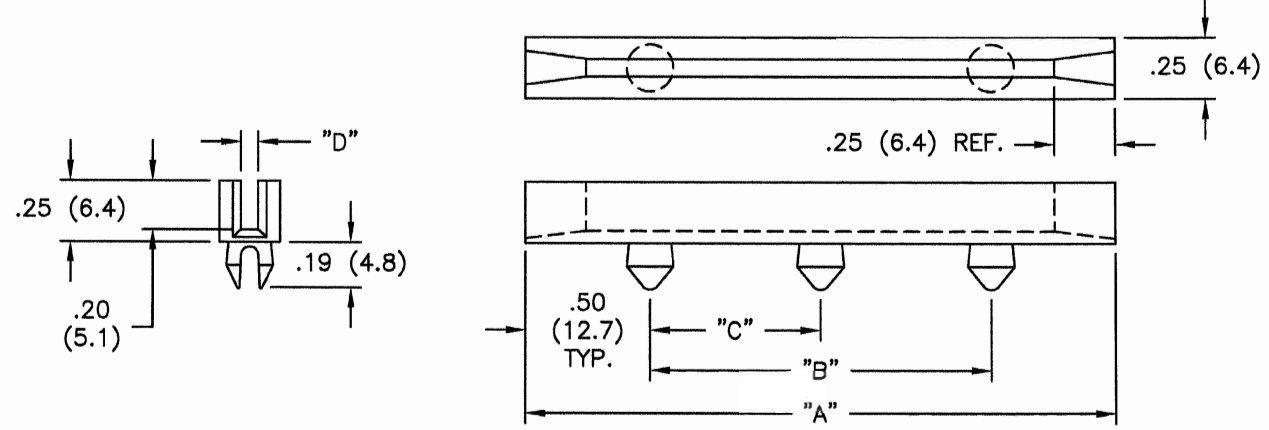
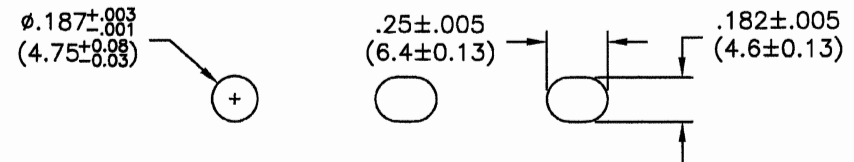


PART NO.	"A" REF.	"B"±.025 (±0.63)	"C"±.015 (±0.38)	NOMINAL BD. THKS.	"D"±.005 (±0.13)
9425	2.50 (63.5)	1.50 (38.1)	-	1/16 (1.6)	.080 (2.0)
9445	4.50 (114.3)	3.50 (88.9)	-		
9460	6.00 (152.4)	5.00 (127.0)	-		
9480	8.00 (203.2)	7.00 (177.8)	3.50 (88.9)		
9445-100	4.50 (114.3)	3.50 (88.9)	-	3/32 (2.4)	.102 (2.6)
9460-100	6.00 (152.4)	5.00 (127.0)	-		
9480-100	8.00 (203.2)	7.00 (177.8)	3.50 (88.9)		
9445-125	4.50 (114.3)	3.50 (88.9)	-		
9460-125	6.00 (152.4)	5.00 (127.0)	-	1/8 (3.2)	.132 (3.4)
9480-125	8.00 (203.2)	7.00 (177.8)	3.50 (88.9)		



- NOTES:
1. MATERIAL: FLAME RETARDENT NYLON, UL RATED 94V-0.
 2. COLOR: BLACK.
 3. SLOTTING OR ELONGATING OF 2ND AND 3RD MOUNTING HOLE IS RECOMMENDED TO ALLOW FOR LENGTH VARIATIONS IN MOLDING AND ASSEMBLY EASE.



TITLE: DEEP CHANNEL CARD GUIDE				DWG IN IN(mm)		FINAL	
TOLERANCES UNLESS NOTED .XX=±.010 .XXX=±.005 FRAC=1/64 ANG=1°		FILE # 94 SERIES	DWN: J.B.	APP:	PART #		
MAT'L: SEE NOTES		RE:	DT: 04-08-97	DT:	SEE TABLE		PRINT TYPE
TEKNATIONAL P.O. BOX 926 FT. MYERS, FL 33902 800.576.9981						CA	

REV	DESCRIPTION	ENGR	DATE
B	-100 SERIES ADDED	RS	060105
A	-125 SERIES ADDED	RS	050289